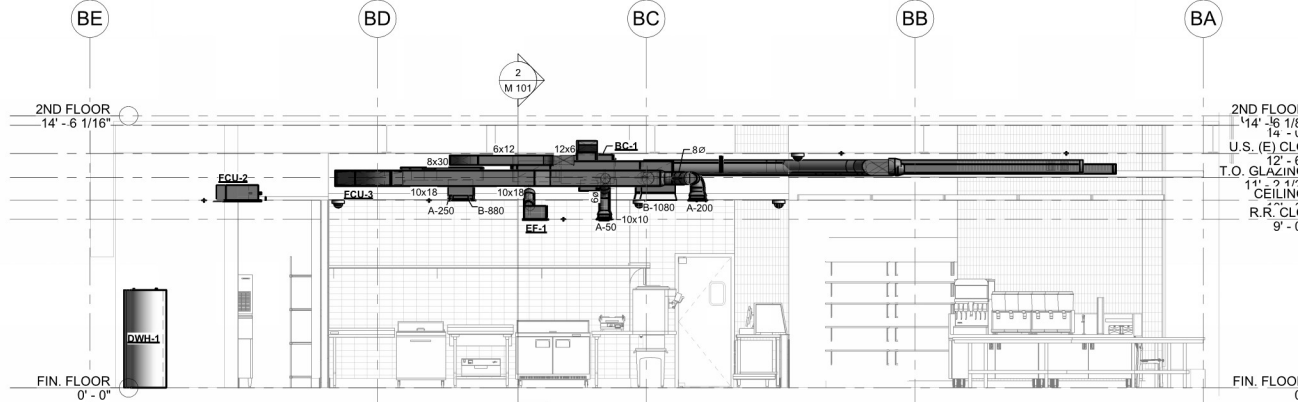
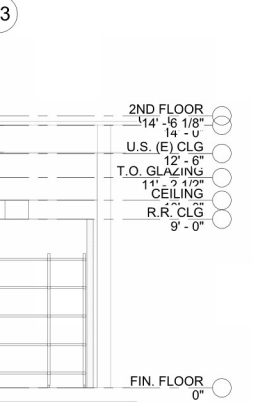


MECHANICAL EQUIPMENT, DUCT AND PIPING MOUNTING NOTE
 REFER TO LANDLORD'S BASE BUILDING STRUCTURAL DRAWINGS SHEET S5.13, DETAIL #5 FOR INSTALLATION OF SECONDARY FRAMING IN THE EXISTING TERRAZZOTA CONCRETE CONSTRUCTED BUILDING FOR THE SUSPENSION MECHANICAL EQUIPMENT, PIPING AND DUCTWORK.

MECHANICAL DUCT PLAN
 1/4" = 1'-0"



MECHANICAL SECTION THROUGH KITCHEN AND DINING ROOM